

SINGLE SIDE RETAINING ANGLE

INSTALLATION INSTRUCTIONS

VERTICAL OR HORIZONTAL MOUNT 1-1/2 HR RATING

"Lloyd Rapid Mounting Angles" (For use on one sided angle installations)
 These instructions apply to 1-1/2 hour rated combination fire/smoke, smoke, Dynamic, and curtain fire dampers mounted in masonry, block, or metal, stud walls and floor.

Angles shall be a minimum of 1-1/2" X 1-1/2" X 16 Gage for openings in metal stud, and concrete/masonry walls and floors of 48"x36" and less. Mounting Angles are only required on one side of the wall or top of the floor. They must be attached to both the sleeve and the wall. Mounting angles may be installed directly to the metal stud under the wall board on metal installations only. Sizes larger will require the previous retaining angle design which consisted of 4 separate angles per side.

For one sided Lloyd Rapid Mounting Angle installations, the sleeve fasteners shall be no. 10 sheet metal screws spaced 3" from each end and no greater than 12" on center.

With a minimum of two (2) fasteners on each side, top and bottom, wall/floor fasteners shall be no. 10 sheet metal screws 2" long; two screws on each side angle spaced 3 inches from each end; three screws on each head and sill angle with one screw in the center and one at each end spaced 3 inches from the ends.

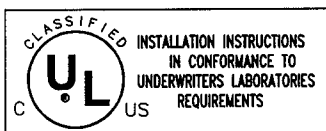
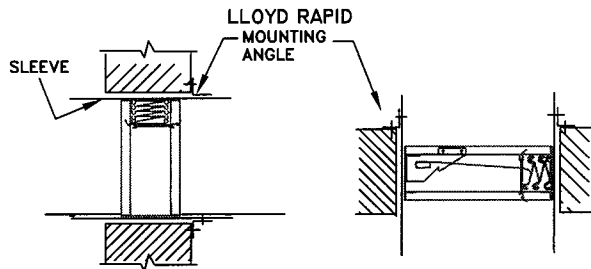
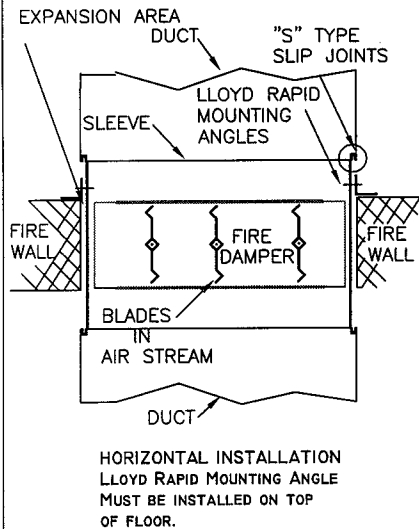
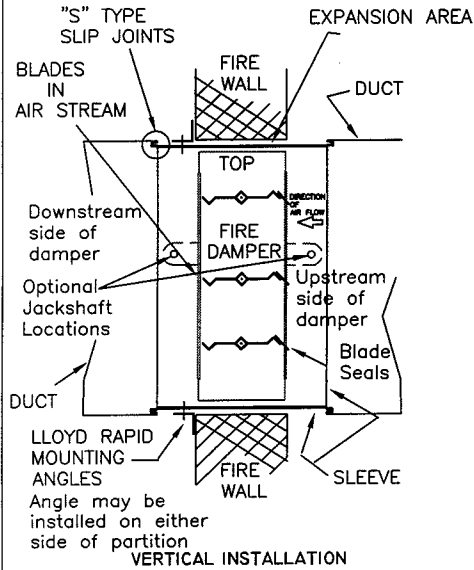
Screw fasteners used in metal stud must engage the metal stud a minimum of 1/2"

Screw fasteners used in masonry walls or floors must engage the wall or floor a minimum of 2"

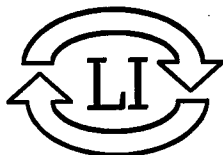
Angles should overlap the partition a minimum of 1" around the entire opening.

Installation per NFPA.90A, UL555, and SMACNA Fire Smoke and Radiation Installation Guide.

FASTENERS MUST BE PLACED WHERE THEY DO NOT INTERFERE WITH THE DAMPER OPERATION.



CLLOYD-61-REV-E



LLOYD INDUSTRIES INC.

231 COMMERCE DRIVE
 MONTGOMERYVILLE, PA. 18936
 TEL: 215-412-4445
 FAX: 215-412-4409
 EMAIL: LLOYDIND@FIREDAMPER.COM

5858 BROADWAY AVE.
 JACKSONVILLE, FL. 32254
 TEL: 904-378-8440
 FAX: 904-378-8441
 EMAIL: LLOYDINDI@BELLSOUTH.NET

WEB SITE: FIREDAMPER.COM