



LLOYD INDUSTRIES INC.

WWW.FIREDAMPER.COM

CEILING RADIATION DAMPER WITH REGISTER BOX ASSEMBLY

MODEL:

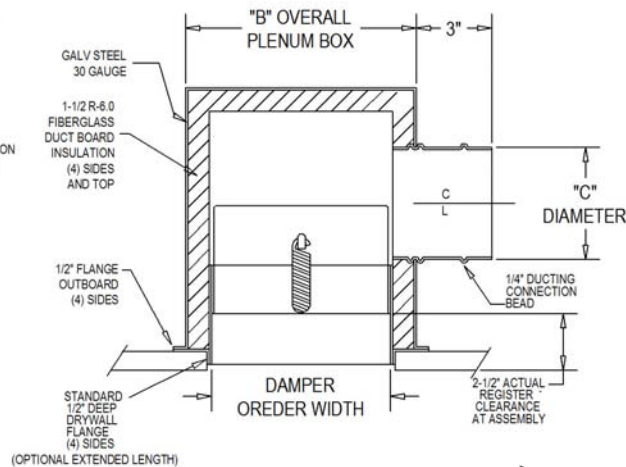
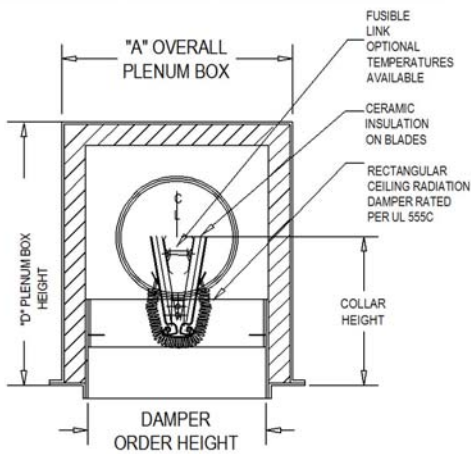
CRD50-BT-6.0

CRD50-EA-BT-6.0

APPLICATION

Model CRD50-BT-6.0 / CRD50-EA-BT-6.0 is an 1-Hour rated CRD/ Register/Grille assembly. CRD/Plenum box is UL fire rated Floor/Ceiling and Roof/Ceiling wood truss assemblies L-558, L562, L563, L574, L585, P533, P544, P545 and P547.

TYPE CRD: "RECTANGULAR"
SIDE OUTLET
& "RECTANGULAR"



CEILING RADIATION DAMPER

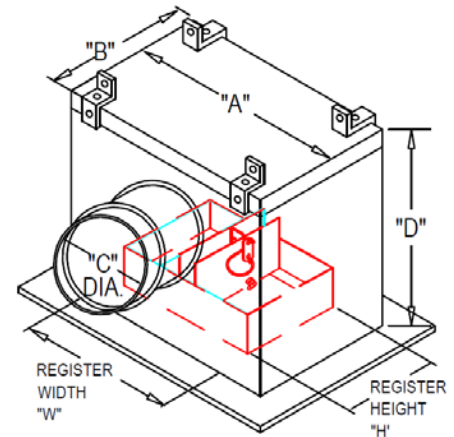
- Fusible Link: 165°F standard
- Blades: 22 Ga. Galv. Steel with ceramic fiberglass cover
- Frame: Roll formed 22 Ga. Galv. Steel

PLENUM BOX

- Outer Box: 28 Ga. Galv. Steel
- Collar: Roll formed 28 Ga. Galv. Steel with roll formed 1/4" beading
- Insulation: Fiberglass duct board 1-1/2" thick (R-6.0)
- "C" Diameter provided nominal order diameter

NOTES:

- Available in stainless steel.
- Available with extended length drywall flange.
- Manufactured with blades opening as shown. (Except when register width "W" is less than 6".)
- Minimum CRD50-EA-BT-6.0 register sizes not less than 6" on width and 6" on height.
- Ceramic insulation is not required on dampers with areas less than 80 SQ/IN and is optional. Dampers above 80 SQ/IN will be provided with blade insulation.
- **Meets UL263, NFPA 90A requirements.**



Minimum Size (WxH)	Maximum Size (WxH)
4"x4"x2" (collar)	16"x16"x12" (collar)



INSTALLATION INSTRUCTIONS
AND THE PRODUCTS SPECIFIED, ARE
IN CONFORMANCE TO ALL OF
UNDERWRITERS LABORATORIES
REQUIREMENTS 555C